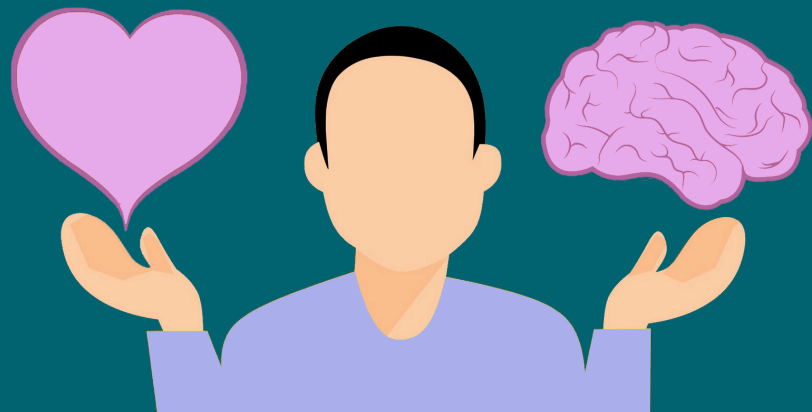
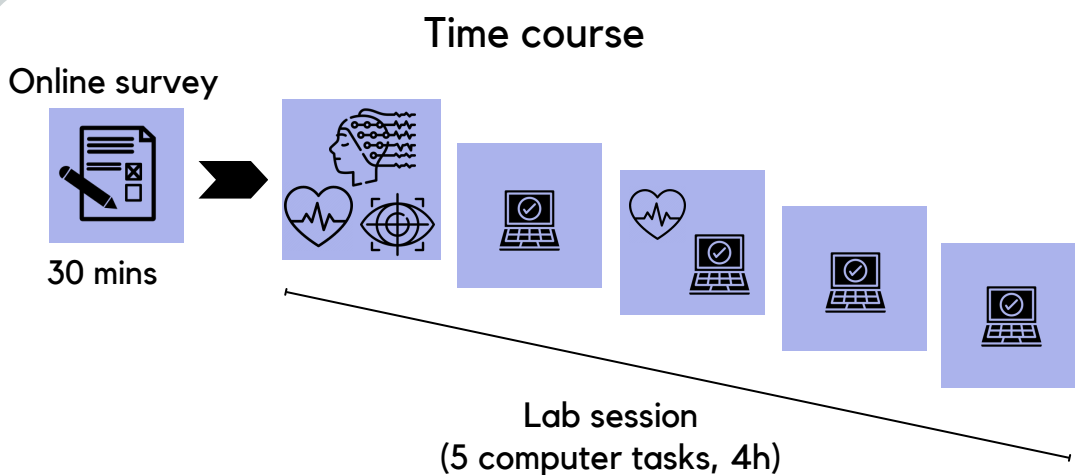


# How much do you know about your emotions?

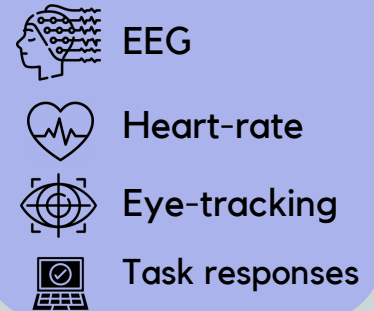
## Participate in our study!



Help us understand how well people perceive their own emotions and those of others.



We will measure your:



### Requirement for Study Participation:

18-60 years old

Fluency in English

Normal or corrected-to-normal vision

No current or recent psychiatric or mental health conditions

No history of neurological or cardiovascular disorders

### Compensation:

10€ per hour (max EUR45) or VP-credits.

### Study Information

This study will explore how well we recognize the emotional states we experience at a given moment and those of others. We will assess different aspects of your emotional life, by means of five behavioral tasks and several questionnaires. We invite you to take part in this exciting study that will give us insight into what factors are related to accurate emotion recognition.

### Interested in taking part?

Scan this to check if you are eligible



Do you have  
questions?

Please contact:  
paula.alarcon  
@student.hu-berlin.de

### Disclaimer:

One task of this study involves viewing a variety of pictures, some being categorised as unpleasant (e.g. depicting violent, sexual, blood, or war content, among others)

Your consent to participate implies you are aware of this aspect of the study.